

Installation Manual for Constructor

Appreciate for choosing our product "Metal Laundry Pole Holder for Window Wall".
Please read this manual before installation. Please give this manual to the user after installation.

⚠ WARNING

This symbol indicates that minor injury or damage to property is possible.

- Use exclusively for drying clothes.
- Do not install this product on the outside of handrails.
- Do not install this product around the exit areas or any fire defense equipment.
- Be careful not to drop the parts and tools when installing the product from at height level.

Approx. Weight 30kg (per set)

⚠ NOTE

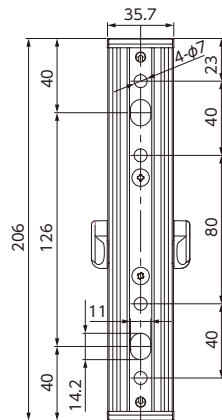
This symbol indicates that minor injury or damage to property is possible.

- Determine the point to install after proper discussion with the customer.
- Grasp inside structure of the building and condition of the wall perfectly, install by fastener capable of holding strength.
- The inundation to the fastener part which was installed is assumed.
When you made holes on the exterior wall when installation, fill the hole with a waterproof sealing agent to prevent from the inundation.
- The adhesion of dust and dirt influences the movement and sound of upward and downward operation.
- Make sure to adjust tightening torque when electric drills are used. Using impact drills is strictly prohibited.

Installation

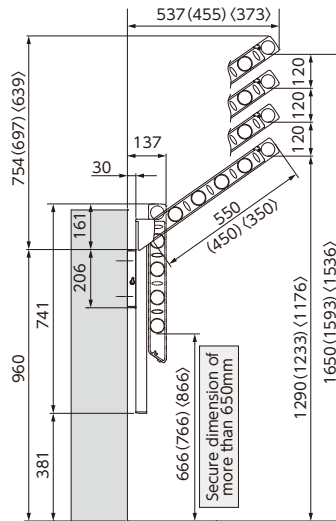
1. Position the hardware into the pilot hole, while carefully attaching the fastener in a vertical position.
※Fastener (screws, bolts, and anchors) are optional.
2. Push the knob in and slide the slide beam into the hardware.
- ※Adjust the slide beam caps towards you so that the slide beam can be inserted.
3. Shift the slide beam cap in the direction of the arrow and tighten the screw again.
4. If you cannot obtain 650mm minimum height from the ground or the wall struts, adjust the sliding beam until the minimum distance is met.
5. Please double check to make sure that the arm moves smoothly.

1 Metal Fittings Dimension

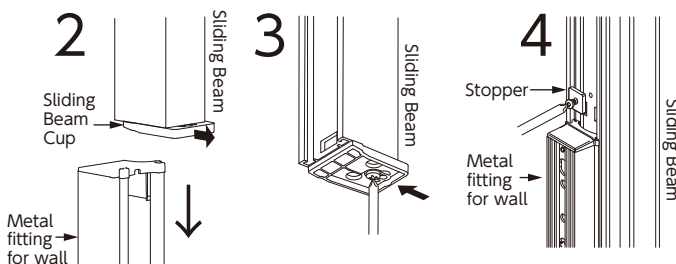
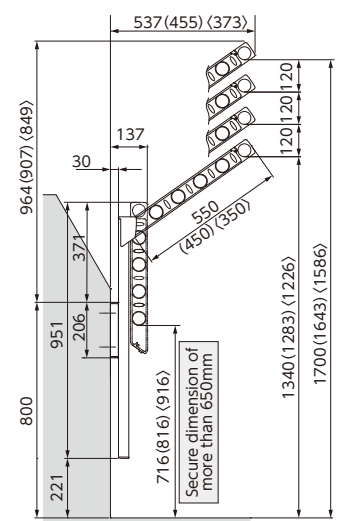


Mounting Dimension

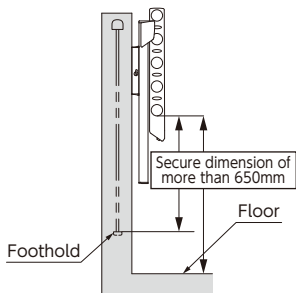
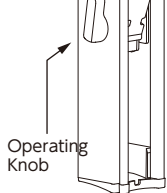
SF55 (SF45) <SF35>



SFL55 (SFL45) <SFL35>



Public Housing Installation Standard



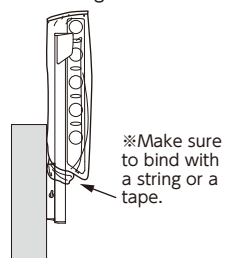
Please keep the device a minimum of 650mm above the ground or bottom of the wall struts.
If you don't have enough space, rearrange the position of the stoppers to provide at least 650mm above the ground.

■ PARTS

Name	Diagram	The number	Specification-Material
Body		2	Aluminum die-casting Polypropylene resin
Manual for User and Condition		1	

■ Construction Cover

Please keep the packing bag over the items to keep in good condition until usage.



■ Fitting Parts

For Concrete Wall — Model No. DRY-06-05
Anchors for M8 (4 pc.) Washers for M8 (4 pc.)
Hexagon bolts M8X25 (4 pc.)

For Wooden Wall
Model No. DRY-06-14 Hexagon Coach Screws $\phi 8 \times 90$ (4pc.) Washers $\phi 8$ (4pc.)
Model No. DRY-06-02 Hexagon Coach Screws $\phi 6 \times 75$ (4pc.) Washers $\phi 6$ (4pc.)

For Support Beams 50 (Transfixion)
Model number: DRY-06-06
Hexagon bolts M8 \times 80 (4pc.) Washers for M8 (8pc.)
Hexagon nuts for M8 (4pc.) Spring washers for M8 (4pc.)

For Support beams 70 (Transfixion)
Model number: DRY-06-07
Hexagon bolts M8 \times 100 (4pc.) Washers for M8 (8pc.)
Hexagon nuts for M8 (4pc.) Spring washers for M8 (4pc.)

Manual for User

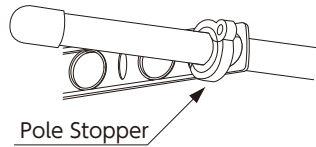
Appreciate for purchasing our product "Metal Laundry Pole Holder for Retaining Wall".
After reading the manual, keep it in an easily accessible place for future reference.

WARNING

This symbol indicates a potentially hazardous situation which is likely to cause death or severe personal injury if the instructions under this heading are not followed correctly.

- Use exclusively for drying clothes.
- Do not hang on the laundry pole. Make sure that children do not play with it.
- To prevent laundry poles falling, please use pole stopper at both ends of the laundry poles.

**Approx.
Weight 30kg
(per set)**



NOTE

This symbol indicates that minor injury or damage to property is possible.

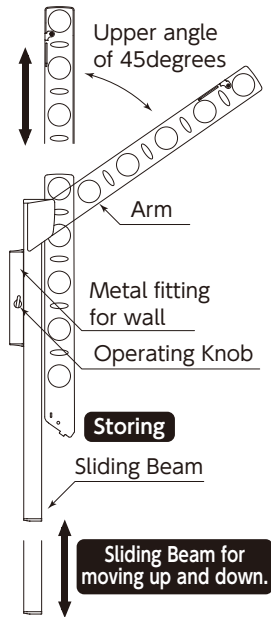
- Please avoid using laundry rope, as this may damage the product, Please use laundry pole.
- Hanging out any heavy loads except the washing may cause trouble and damage.
- Before operating this product, make sure to read this operation manual to ensure full understanding of this product.
When operating in a wrong way, may cause trouble and damage.
- Please avoid using at the time of strong wind.

User Guide

Positioning the arm

The arm moves to an angle and the stored positions

- To position the arm at an angle from the stored position, lift the arm upwards until it stops, pull it to your side and lock it.
- From angle to storing position, swing the arm vertically up to the stop and then gently lower it. Please check that the arm is firmly fixed.



Slider Beam Operation

- To raise the slider beam, push the slider beam up, Once you hear it click, it is being locked at that position.
- To lower the slider beam, please use both hands, Raise the beam slightly and push towards the wall to slide it up and down.

《Note》
Do not touch the stopper lever without raising the slider beam. It can break lever.

Maintenance

Daily Care

- Light dirt
Clean with a wet dust cloth or a sponge and then dried off with a dry cloth.
- Heavy dirt
Clean with diluted neutral detergent and clean if off with water properly not to remain detergent. Dried off with a dry cloth.

Important

- To prevent from damage, please avoid using a metal brush, metal spatula, steel wool sponge roughly-woven paper and sandpaper.
- Make sure that the neutral detergent is diluted.
Never use any acid, alkalis and chlorine-containing chemicals which cause corrosion and peeling off the paint.
- ※ When using the neutral detergent, rinse if off completely. Leaving it as remaining detergent cause corrosion.

Frequency of maintenance by area.

Location conditions	Frequency
Littoral industrial area.	3times/per year
Coast area·Industrial area.	3times/per year
Urban area	2times/per year
Countryside.	1times/per year

《Note》After passing through the typhoon, wash off with water because the product might be exposed to wind and rain contained salt by a typhoon.



TAKARA INDUSTRY CO.,LTD.
タカラ産業株式会社

2-2-30 Nagata Eminence Bld. 2F,
Nagata Naka,Higashi Osaka-City,Osaka,
577-0013, Japan
TEL: +81-6-7711-3080

<http://www.takaranet.co.jp/eng/>