

## Installation Manual for Constructor

Appreciate for choosing our product "Room Laundry Pole".

Please read this manual before installation.

Please give this manual to the user after installation.

### ⚠ WARNING

This symbol indicates that minor injury or damage to property is possible.

- Make sure to install the base/bracket in places where sufficient strength can be secured.
- Do not install near flame or hot surfaces, such as a stove.
- Install this product in a dry place where it will not interfere with air conditioners or gas and fire alarm sensors.

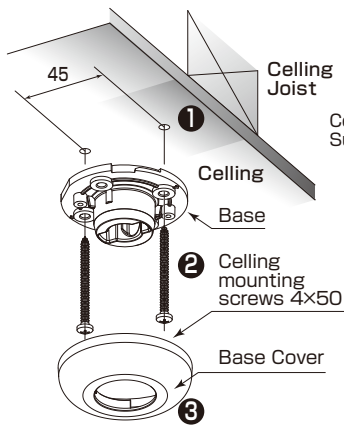
### ⚠ NOTE

This symbol indicates that minor injury or damage to property is possible.

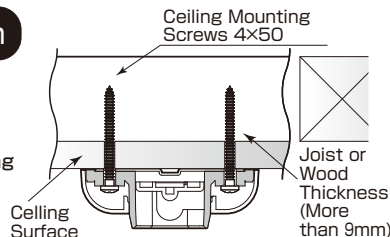
- This product is for indoor use only.
- Do not install in a place that impedes the movement of people, such as an emergency exit.
- Do not disassemble or remodel.

## ■ Installation

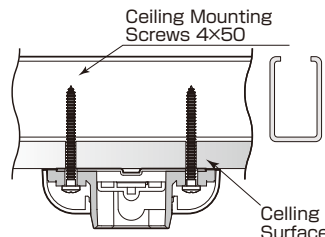
### Base Installation Instruction



### Installation Instructions

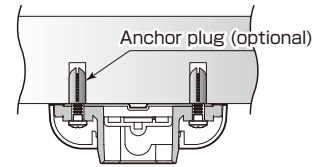


■ When mounting on a wooden ceiling base  
※The included mounting screw (φ4X50) can be used.



■ When mounting on a light ceiling base

※The screws included with this product cannot be used. Please purchase appropriate screws.



■ When mounting on a concrete base

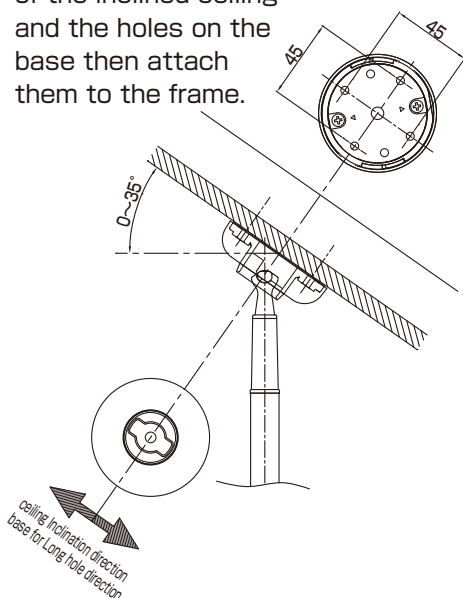
- ① Please check the specifications of the ceiling.
- ② Use a driver and use proper fastener to mount the base on your ceiling.
- ③ Once you have mounted the base firmly, put the base cover on.

### ⚠ WARNING

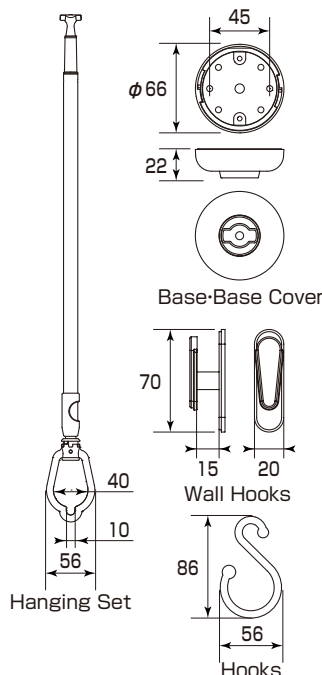
Please do not use electric power tools only. Be sure to stop before the end of the tightening or the screws and use a hand tool to screw tightly. When your ceiling base is made with either light base or concrete, please consult a specialist.

### Installation method for inclined ceiling

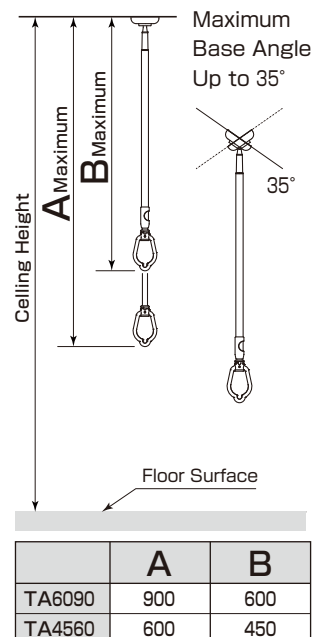
Align to the direction of the inclined ceiling and the holes on the base then attach them to the frame.



### Dimension



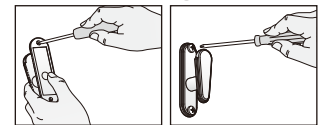
### Installation Layout



	A	B
TA6090	900	600
TA4560	600	450

### How to install wall hooks

Attach the wall hook to the wall using the mounting screws as shown below. ※This product should be installed in areas like the framing beam.



Etch a pilot hole on the hook. Fixing the hook on the hook.

### PARTS

Name	The number	Specification-Material
Base	1	ABS Resin
Base Cover	1	ABS Resin
Ceiling Mounting Screws 4x50	2	SUS
Hanging Set	1	AL etc.
Wall Hooks	1	ABS Resin Double Faced Tape
Wall Hooks Mounting Screw 4x16	2	SUS
Hook	1	ABS Resin
Manual for User and Constructor	1	

**Manual for User**

Appreciate for purchasing our product "Room Laundry Pole". After reading the manual, keep it in an easily accessible place for future reference.

**WARNING** This symbol indicates a potentially hazardous situation which is likely to cause death or severe personal injury if the instructions under this heading are not followed correctly.

- Do not use this product for purposes other than drying clothes in your room.
- Keep your laundry away from fire and heating equipment.
- Keep your children away from hanging on or bumping into the products.
- Do not use this product to swing or play with.
- Do not hang more than the load strength of 8kg on this product.
- If you're using two sets of poles, please hang all laundry evenly.

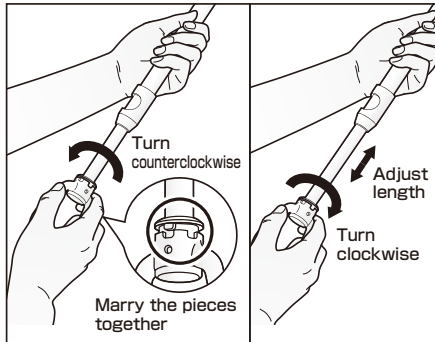
**NOTE** This symbol indicates that minor injury or damage to property is possible.

- Do not drop this product.
- Do not disassemble or remodel.
- If the product wobbles and you have already tightened the screws, please refrain from using this products.
- When installing in the vicinity of window glass, do not use it in the event of strong winds. Remove the hanging rod from the base.
- Adjust the length of the hanging rod while it is detached from the base.
- Do not attach or detach the hanging rod with the laundry hanging.

**Instructions**

**How to install and uninstall hanging rods.**

1. Match the unevenness of the upper part of the ring.
2. Hold the upper part of the hanger with one hand and turn the ring counterclockwise to loosen the connecting part of the hanging rod to adjust the length.
3. Turn the ring clockwise at the location you like to secure the bottom of the hanging rod.

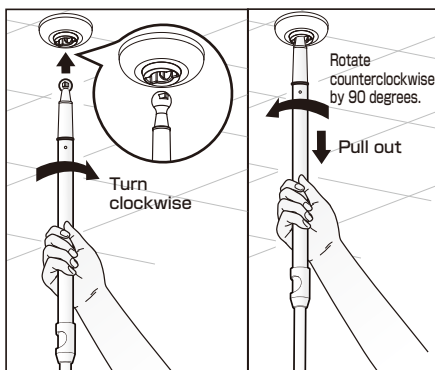


**!** When adjusting the length of the hanging rod, please adjust so you do not exceed the red line.

Red Line

**How to install and uninstall hanging rod.**

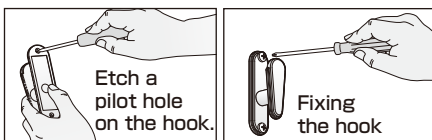
- How to install the hanging rod.**
1. Insert the tip of the hanging rod vertically into the hole of the base.
  2. Lightly push it in and rotate clockwise about 90 degree.
  3. Move the hanging rod gently and confirm that it is firmly attached to the base.
- How to uninstall the hanging rod.**
1. Lightly push the hanging rod into the base and rotate counterclockwise 90 degree.
  2. Pull out the tip of the suspension material from the base.



**How to store the hanging rod**

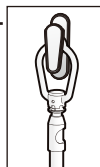
**How to install wall hooks**

Attach the wall hook to the wall using the mounting screws as shown below.  
※This product should be installed in area like the framing beam.



**How to use a wall hook**

When not using this product, remove the hanging rod from the base and store it in an appropriate place.



**When using a laundry pole**

**Use two products as one set.**

**!**

- When using two products (a set), use within the 8kg load capacity, including the laundry pole.
- Adjust the lengths of both hanging rods so that the laundry pole is horizontal.

**Estimated amount of washable items to dry**

- Example (4 member family)**
- 2 sweatshirts.
  - 2 both towels
  - 5 pairs of stocks (using small hanger).
  - 4 sets of half sleeves shirts/ T-shirts.
  - 4 sets of long sleeve shirts or blouses

**Weight of Laundry**  
<Internal Research>

(Please use this as reference.)

	Damp Laundry Weight
Long Sleeve Shirt	Approx.250g
Short Sleeve Shirt	Approx.200g
T-Shirt (Cotton)	Approx.200g
Towel (Cotton)	Approx.150g
Bath Towel (Cotton)	Approx.500g
Sweatshirt (Cotton)	Approx.900g
Denim Pants (Cotton)	Approx.1000g
Skirt	Approx.600g
Kid's Skirt/Pants	Approx.300g

**Maintenance Instructions**

**!**

- When cleaning this product, do not use thinners, benzene, alcohol cleaners or glass cleaners containing organic solvents.
- Periodically check to make sure there is no wobble at the base and stop using it if there is.

- Wipe the dirt with a soft damp cloth. Also, wipe off persistent dirt with a cloth containing neutral detergent, then wet with water and wipe with a separate damp cloth.
- Remove the base if any objects or dust are caught or accumulate in the base hole.



**TAKARA INDUSTRY CO.,LTD.**  
タカラ産業株式会社

2-2-30 Nagata Eminence Bld. 2F,  
Nagata Naka,Higashi Osaka-City,Osaka,  
577-0013, Japan  
TEL: +81-6-7711-3080  
<http://www.takaranet.co.jp/eng/>