

---

English

---



タカラ産業株式会社

# Takara's Enthusiasm to Prompt Action

## Responding Faster Than Anywhere Else

### Prompt Action -To the World-

Since the foundation in 1980, based on our slogan "Prompt Action" and "Development is Only Way to Survive", we have been developing numerous numbers of products related to people's lifestyle.

Number of products we created are already several tens of thousands. We are proud of all products created with our original ideas and spirit, in order to realize customer's better life.

We think the "speed" is an important element to meet sudden changing market of recent times.

Takara is working on the production with a sense of speed, utilized simple and smart organization, a particular advantage of medium sized organization.

In the big company, they often spend sufficient time for market research properly and carefully in prior to do the production, but that may cause losing right timing and opportunity in that case.

Prior production at the starting stage of idea and development, grasp actual evaluation by the customer with actual product. This speed and flexibility emphasized style is Takara Industry's approach.

Although it is important to write on the paper and make every decision for product development, Takara doesn't persist only in this point. Safe and secure production based on continuous working on understanding "actual situation" with "actual product" at "actual site" shall be important.

We continue to make our effort to develop the products which shall contribute people's happiness under our slogan "Development is only way to survive", without being confined to small country like Japan, turn our eyes to the world.

Takara Industry Co.,Ltd.  
President

**Nobuaki Hizume**

## Management Principle

### Sociality

Based on sincerity and reliability, we contribute to the society by providing products which make costumers satisfied as much as we can with our abilities in development, imagination and technical skills.

### Human Nature

We, all members of TAKARA, corporate with each other and make our company a place desired to work at. The purpose is making everyone happy not only members of TAKARA but also our family members and all of the people effected by the company's existence.

### Science

We challenge for producing positively without being afraid of anything. We keep growing by showing originality and various ideas.

## Technological Capabilities that make effective and quick response a reality.

Our strength is our technical capabilities that we have cultivated and accumulated over the many years.

Since 1980, we have acquired more than 190 patents, utility models and design rights through our business activities.

The technological developmental environment that is centered on such intellectual property have made it possible for us to propose solutions to our clients problems. We will continue to work hard to do research on technological development that match the times.



## Planning, Functional Designing, Safety measures.

We hold functional design conferences to consider various viewpoints once a month. It helps proposing the most suitable products or services for items in demand. We promote business activities to make all customers related our company pleased.



### Planning

We provide opportunities to have planning discussions over departments. We consider through development concepts of products, market background, customers' needs analysis and sales strategy.

### Functional Designing

Full-time designers are positioned at Osaka and the factory in Toyama. We make design specifications for requested products promptly.

### Safety measures

We hold employee training seminars periodically through a year. We all deepen our knowledge concerning products safety culture. We introduce a risk assessment at the stage of development and designing of products. We construct developing environments incorporated with product safety measures.

## TAKARA the Brand Customers can Trust

Our safety measures of products are made for end users and sales people to use our products confidently. Each member of our company keeps in mind the challenges concerning product developments by the view point of our customers.



# Factories and Equipment that Realize Trust and Speed

## Outline of Takara Industry Co.,Ltd.

Name: Takara Industry Co.,Ltd.  
 Starting Business: April, 1980  
 Establishment: May, 1983  
 Capital: 66,400,000 Japanese yen  
 Yearly Turnover: 2,000 million Japanese yen (May, 2023)  
 President: Nobuaki Hizume  
 Number of employees: 86 (May, 2023)  
 Head office: 2-2-30 Nagata Eminence Bld. 2F, Nagata Naka, Higashi Osaka-City, Osaka, 577-0013, Japan  
 TEL: 06-7711-3080  
 Branches: Osaka, Tokyo, Hokuriku  
 Factories: Toyama, China (Suzhou)  
 Distribution center: Toyama distributions  
 Representative Office: Ho Chi Minh City, Vietnam  
 Business details: Start-to-finish production (production to assembly) and sales of manufacturing of plastics, metal work products



### Main business partners:

Itoki Corporation, Kokuyo Furniture Co.,Ltd., Sankyo Tateyama, Inc., Techno Associe Co., Ltd., Nitto Koki, Panasonic Corporation, PlaMatels Corporation, Bunka Shuter Co., Ltd., Lixil Corporation, Ykk Ap Inc. (The rest is omitted.)

## Factories • Equipment

### Toyama Factory

Address: 290, Mikkaichi, Fukuoka-Machi, Takaoka-City, Toyama, 939-0102, Japan  
 TEL: 0766-64-1610  
 FAX: 0766-64-1601  
 ISO 9001:2015 Certification acquisition



#### Manufacture Factory Equipment

Injection molding machine (50ton – 220ton) 11 (total number)  
 Traverse  
 Palletizing and Conveying Machine  
 5 axis servo traverses  
 Wet process anneal machine  
 PC Connected Optical Microscope  
 Dehumidification dryer

#### Technique, Quality Equipment

Spectrum colorimeter  
 Projector  
 Direct current stabilization power supply  
 3D Printer

#### Injection Mold Factory Equipment

General-purpose slice board  
 NC slice board  
 Molding grinder  
 Small quantities cladding - by - welding machine

We have 2 main business locations at Toyama, Japan and Suzhou, China (established in 1994 as full ownership), as well as several supply chain partners in Vietnam, and conduct selection proposals depending on QDC requests by customers.

At Suzhou Takara, we have experience of over 5,000 OEM molds development, with high evaluations.

## Factory in China Suzhou Takara

Name: Suzhou Takara Industry Co.,Ltd.

Address: No.25 Xing Feng Road,  
 Suzhou New District, Suzhou, P.R.C  
 TEL: (0512) 6532-7083 / 6532-0385

FAX: (0512) 6531-6790

Form of Advance:

100% of Takara Industry Co.,Ltd investment

Capital: 2,000,000 US \$

Establishment: August 4th, 1994

President: Masayuki Minami

Number of employees: 179 (Dec 31, 2021)

Business details: Manufacturing of plastics, metallic manufacturing products, manufacturing and selling

Premises: 22,700m<sup>2</sup>

Building area: 14,000m<sup>2</sup>

IATF16949:2016 (internationally recognized Automotive Quality Management System) Certific

China's High- and New-Technology Enterprise (HNTE) Certified 2019



### Manufacturing Factory Equipment

Injection molding machine: single color form (55ton – 380ton)  
 44 (total number)

Injection molding machine: 2 colors form (400ton – 800ton)  
 8 (total number)

### Injection Mold Factory Equipment

Radial drill board  
 General-purpose lather  
 General-purpose slice board  
 Plane grinder  
 Precision argon welder  
 Precision welding and liquid  
 metal forging machine

### Second processing equipment

Caulking mold machine  
 Tapping drill board  
 Pat press  
 Hot stamp machine  
 Silk press  
 Supersonic wave welding machine  
 High frequency welding machine  
 Wet process anneal machine

### Automatic machines

Rivet automatic press fit machine  
 Automatic counter  
 Automatic packer

### Technique, Quality Equipment

Image measuring instrument  
 Projector  
 Colorimeter  
 Spectrum colorimeter  
 Source of light for color confirmation  
 Film thickness meter  
 Hardness meter  
 Fluorescence X-rays analyzer

## The History of Takara Industry Co.,Ltd.

### From 1980

- 04/1980 Shinji Hizume established Takara Industry Co.,Ltd. in Yao-City, Osaka, Japan.  
(Aluminum building material parts, development production sales)
- 02/1982 Started plastic manufacturing factory (Takaoka, Toyama)  
Moved the head office Started metal manufacturing
- 05/1983 Established Takara Industry Co.,Ltd. (capital 6,000,000 Japanese yen)  
Shinji Hizume was installed as the president.
- 05/1985 Moved newly-established manufacturing factory (Dekiden, Takaoka-City)  
Increased additional manufacturing machine line
- 04/1986 Corporatized Takaoka manufacturing factory independently  
Takara Industry Co.,Ltd. (Takaoka)
- 09/1988 Started the second assembly plant
- 04/1989 Established Baokku Co., Ltd. for the production sales division of original product (OA equipment)

### From 1990

- 07/1990 Established Tokyo office (Nippori, Arakawa-ku)
- 06/1991 Started collaboration business with Suzhou-City, China
- 04/1992 Moved Tokyo office (Ueno)
- 05/1993 Increased capital to 30,000,000 Japanese yen
- 08/1993 Established Hokuriku office (Fushiki, Takaoka-City)
- 08/1994 Established Suzhou Takara Industry Co.,Ltd. (China)  
Shinji Hizume was installed as the president.
- 01/1996 Moved newly-built Suzhou factory (China)  
Premises(approximately 10,000m<sup>2</sup>)
- 02/1998 Added Osaka Small and Medium Business Investment & Consultation Co.,Ltd as a stockholder  
Increased capital to 60,000,000 Japanese yen
- 08/1998 Established the second Suzhou factory (China)
- 12/1999 ISO9002 Certification acquisition (Suzhou Factory)

### From 2000

- 01/2000 ISO9001 Update acquisition (Suzhou Factory)
- 12/2000 Moved the head office (Shinke Higashi-Machi, Higashi Osaka-City)
- 04/2001 ISO9001 Certification acquisition (Toyama factory)
- 05/2001 ISO9001 Certification acquisition (The head Office)
- 03/2003 Merger of Takaoka factory  
Increased capital to 66,400,000 Japanese yen
- 11/2004 Established Nagoya-office
- 05/2005 Moved Tokyo office (Okachimachi)
- 10/2006 Moved and put Hokuriku office, Hokuriku distribution center and Takaoka factory together  
Premises (approximately 6,600m<sup>2</sup>)  
Changed names Takaoka factory→Toyama Factory,  
Hokuriku distribution center→Toyama distribution center
- 09/2007 Moved newly-built Suzhou factory (China) to Suzhou New District  
Premises (approximately 23,000m<sup>2</sup>)
- 10/2008 ISO/TS16949 (certification service for auto industry) Certification Acquisition (Suzhou factory in China)

### From 2010

- 05/2011 Shinji Hizume was installed as Chairman.  
Hiromu Sato was installed as the President.
- 05/2013 The 30th anniversary of the establishment
- 09/2013 Moved the head office (Nagata Naka, Higashi Osaka-City)
- 10/2014 Established Vietnamese Ho Chi Minh Representative Office
- 11/2014 "Good Design Award 2014" Winner
- 09/2015 "Kids Design Prize Award 2015" Winner
- 09/2016 "Osaka Business Rationalization Award 2016" Encouragement Prize
- 11/2016 Moved Nagoya office (Nishi-ku, Nagoya-City)
- 11/2017 Combine Nagoya and Osaka Sectors into one sector.
- 12/2020 Nobuaki Hizume was installed as the President.
- 10/2021 "Osaka Manufacturer's Superior Enterprise Award" Winner in the category of Advanced Intellectual Property

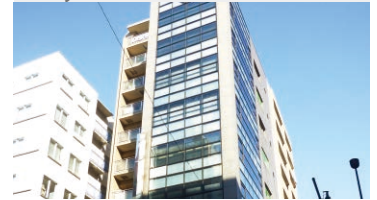
## Offices

### Osaka Head Office



Address: 2-2-30 Nagata Eminence Bld. 2F,  
Nagata Naka, Higashi Osaka-City,  
Osaka, 577-0013, Japan  
TEL: 06-7711-3080  
FAX: 06-7111-3090

### Tokyo Office



Address: 1-11-1 Goshokasugadoori Bld.8F,  
Higashiueno, Taito-ku, Tokyo,  
110-0015, Japan  
TEL: 03-3831-4250  
FAX: 03-3831-4251

### Hokuriku Office



Address: 289, Mikkaichi, Fukuoka-machi, Takaoka  
-City, Toyama, 939-0102, Japan  
TEL: 0766-64-1600  
FAX: 0766-64-1601

### Representative Office

#### Ho Chi Minh Representative Office



Address: 4F, Unit # 402, CITY VIEW BUILDING,  
12 Mac Dinh Chi, Dakao Ward District 1,  
Ho Chi Minh City, Vietnam  
TEL: 028-3822-9190 (country code 84)

# Creative Original Products

## Original Products Development

Takara Industry promotes actively our original life proposal market with our four main abilities - development, production, operation and technical skill.

Our "Takara products" which theme is "life-style improvement" are very useful in various daily life situations.

"DRY WAVE" represents our professional product brand. "HOSETA" represents .

our general product brand. Both brands develop products for every possible daily live situation.

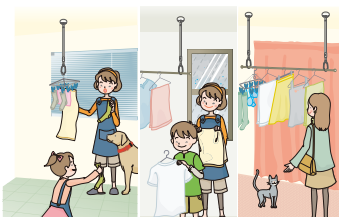
## Choi Hoshi! HOSETA -Clothes poles set for general markets-

Choi Hoshi! HOSETA clothes poles series are designed for general purposes indoor markets.

The stylish designed clothes poles are adjustable, easily install-able to and removable from ceilings.

チョイホシ!!ホセタ  
HOSETA

Simply speaking, Choi Hoshi! HOSETA clothes poles are designed with safety and user friendliness in mind during development.



## DRY WAVE -The clothes poles for professional markets-

DRY・WAVE clothes pole series are for professional markets. It is high quality design and compact in design.

DRY・WAVE  
ドライ・ウェーブ

- ☐ Design that adapt to living space
- ☐ Intuitive operation
- ☐ Simple construction



## Paper Towel Dispenser, Handrail, Air Conditioner Louver, Pet Doors

### TAKARA PAPER HOLDER

#### PAPER TOWEL DISPENSER

We have two types of the dispensers, for 200 sheets of paper and 600 sheets of paper. It is easy to check the amount of paper towel because of our novel, gentle asymmetrical curved surface design with a transparent panel. A removable adapter allows for smaller sheets of paper towels usage.



### Hi・WAVE -Aluminum handrail-

here are 2 choices Φ34 and Φ40. They are designed solidly for usage at outdoor public facilities. The joint is universally designed and engineered for safety. It is safely useable indoors and outdoors.



### WAVE LOUVER

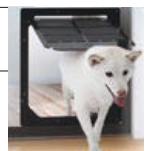
It is an attachment for an air conditioner to widen the direction of the air blowing out. When existing air conditioner's wind direction is not wide enough, tape this to the side of the air conditioner with two-sided adhesive tape.



### PET DOORS for Screen

The Door for your Pets (Cats or Dogs)

It is a door for only the screen doors to let your pets (cats or dogs) come in and out by themselves even though you don't open the screen door for them. For installation, you put the parts of PET DOORS inside and outside of the room and sandwich the screen door, and attach with screws.



タカラ産業株式会社

Address: 2-2-30 Nagata Eminence Bld. 2F,  
Nagata Naka, Higashi Osaka-City, Osaka,  
577-0013, Japan  
TEL: 06-7711-3080

<https://www.takaranet.co.jp>